



Important Notes

- Do not install **ALL NEW** MortgageBrain if you require/are running Mortgage Brain server/client modes.
- If you are an existing Mortgage Brain Premier user, you do not need to uninstall it. **ALL NEW** MortgageBrain will install over your existing Mortgage Brain Premier.

Software Pre-requisites

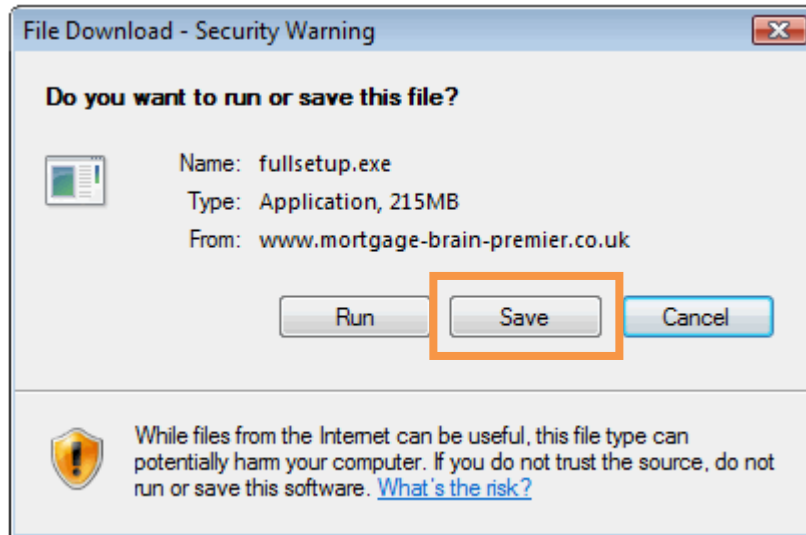
Minimum system requirements:

- **Processor:** 1 Ghz 32 bit Pentium III compatible processor
- **Memory:** 1 Gigabyte
- **Disk space:** 250 Megabytes free
- **Internet:** At least 512 Kbps connection
- **Screen:** 1024x768 resolution
- **Operating system:** Windows XP SP3 (Windows Server 2003), Vista/Windows 7
- **Core software:** Microsoft .Net 3.5
- **Browser:** Internet Explorer 6
- **PDF:** Adobe Acrobat v7 or later

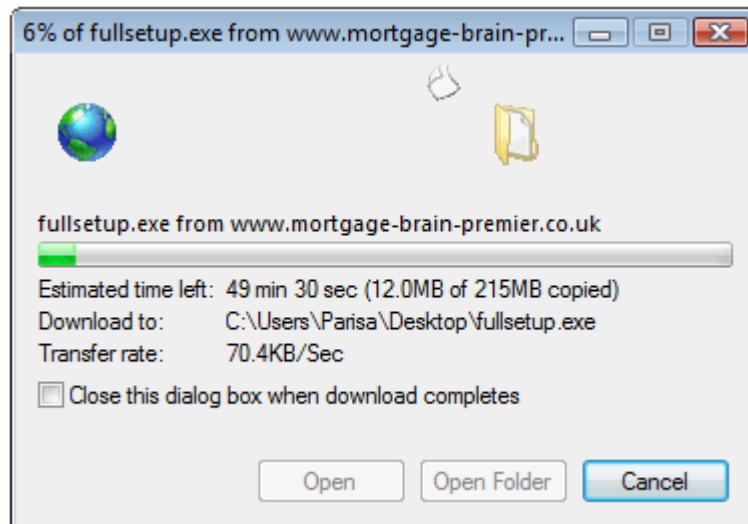


Starting your Installation

- Once you click on the link to download **ALL NEW** MortgageBrain, click **Save** and save to your desktop or downloads folder.

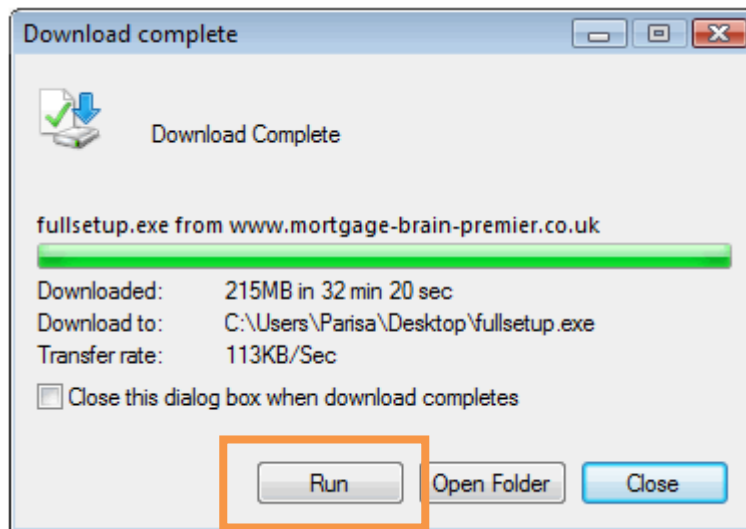


- The box below will appear, this simply shows the download process.

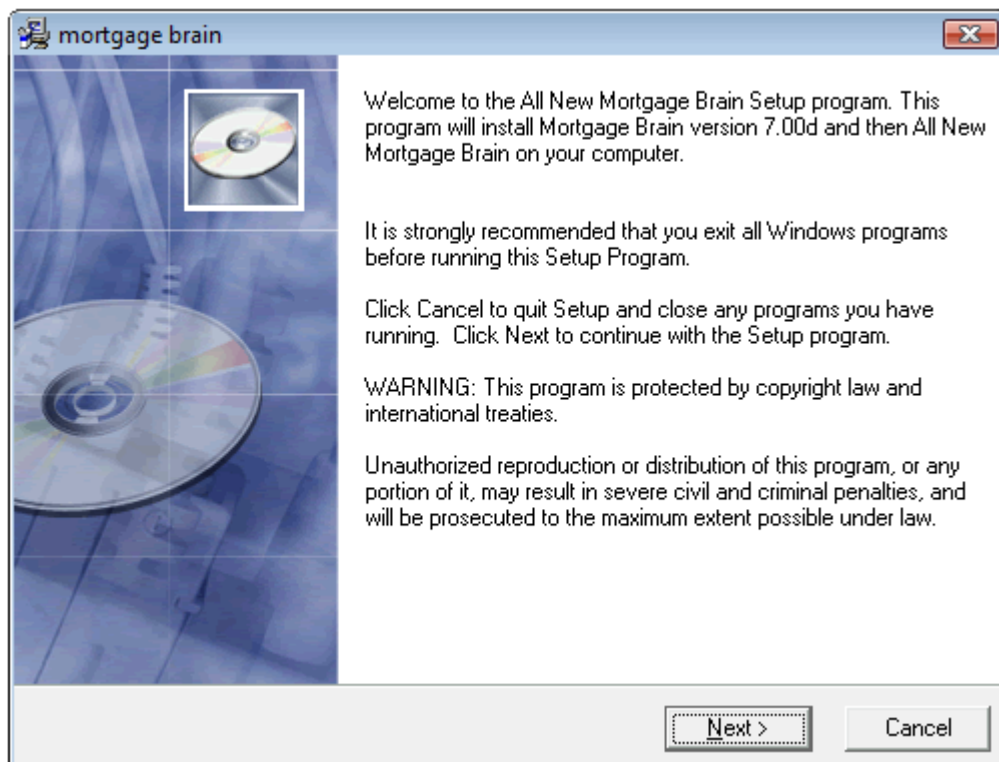




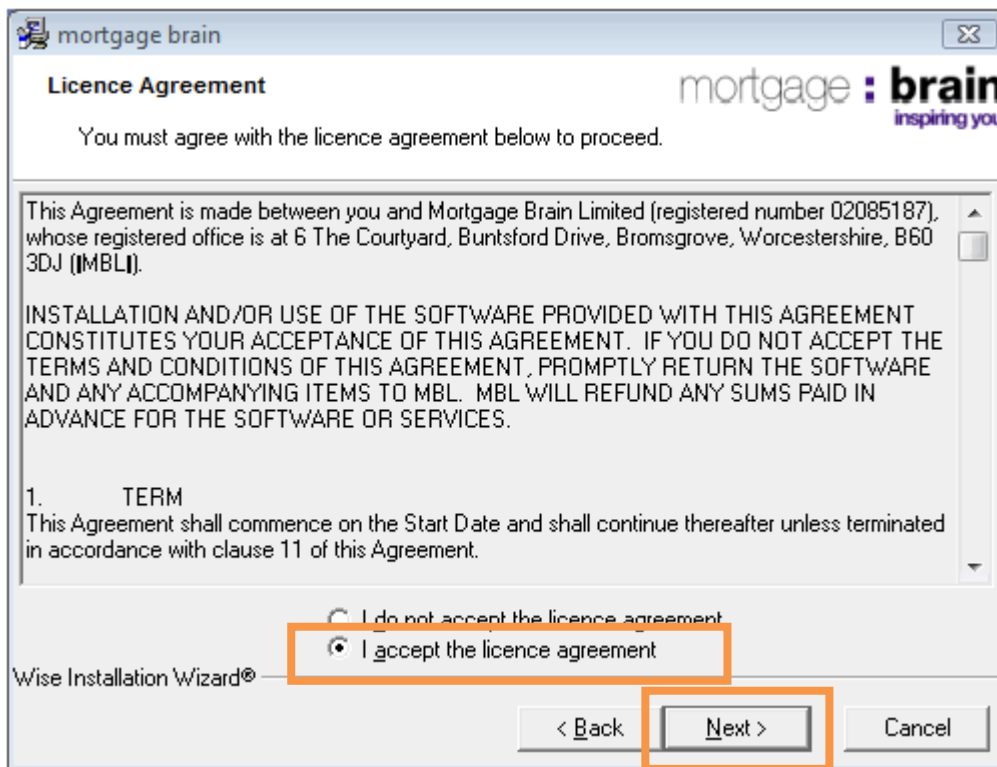
- Once download is complete, the box below will appear. Click, **Run**. If the box doesn't appear, run the setup exe in the destination folder you chose to save to.



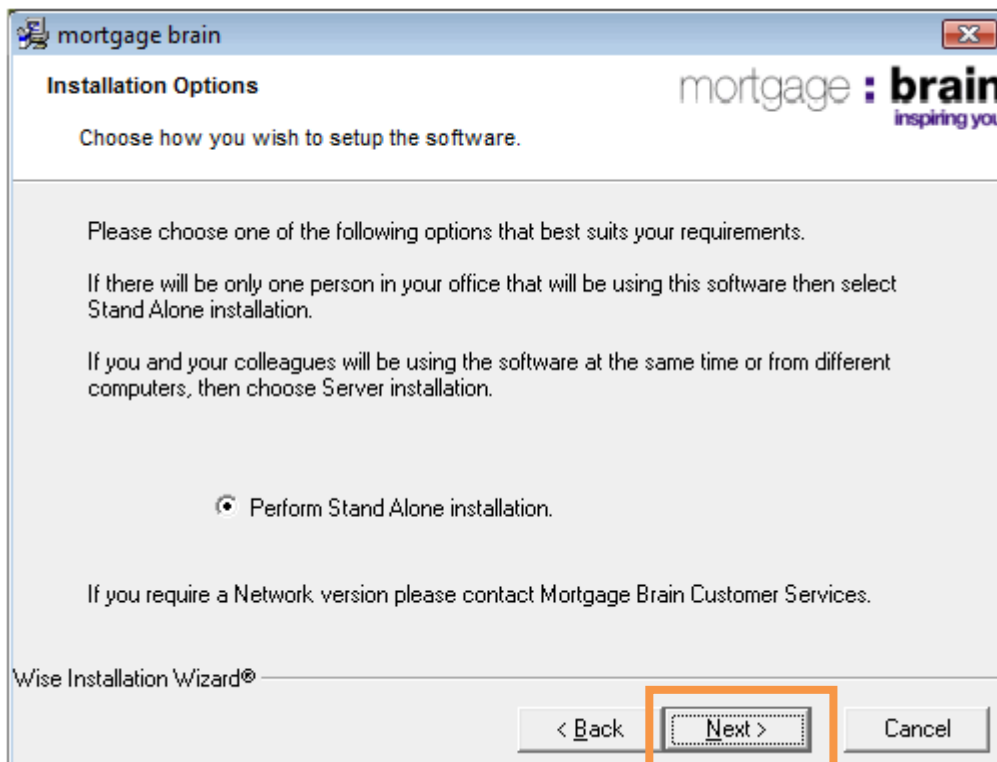
- The **ALL NEW** MortgageBrain setup Wizard will appear. Click **Next**.



- You must **Accept** the Terms and Conditions to proceed, then click **Next** (as shown overleaf):

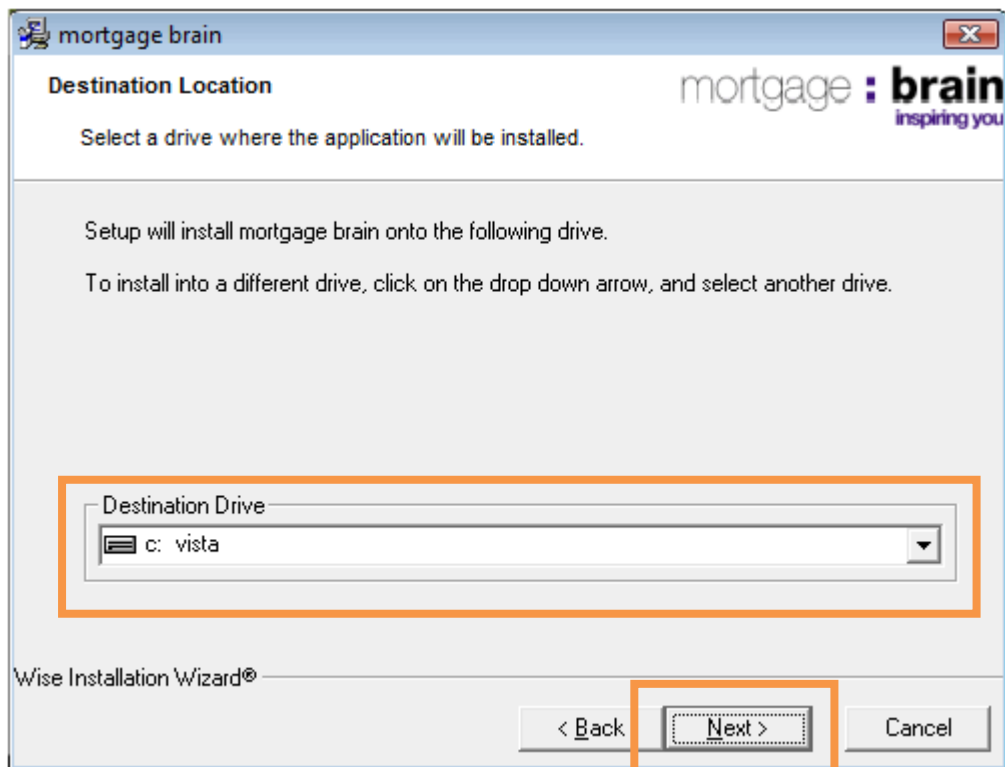


- The screen below then appears, currently you can only install a stand alone version of **ALL NEW** MortgageBrain. Click **Next**

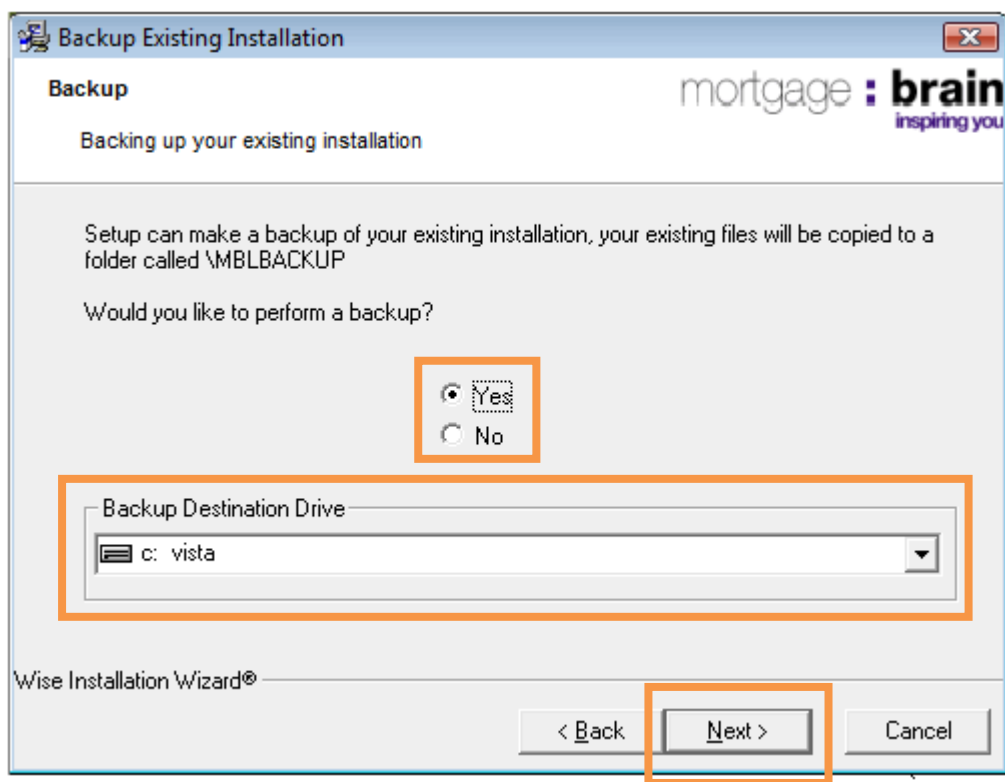




- Select the drive you wish to install **ALL NEW** MortgageBrain on. Click **Next**.

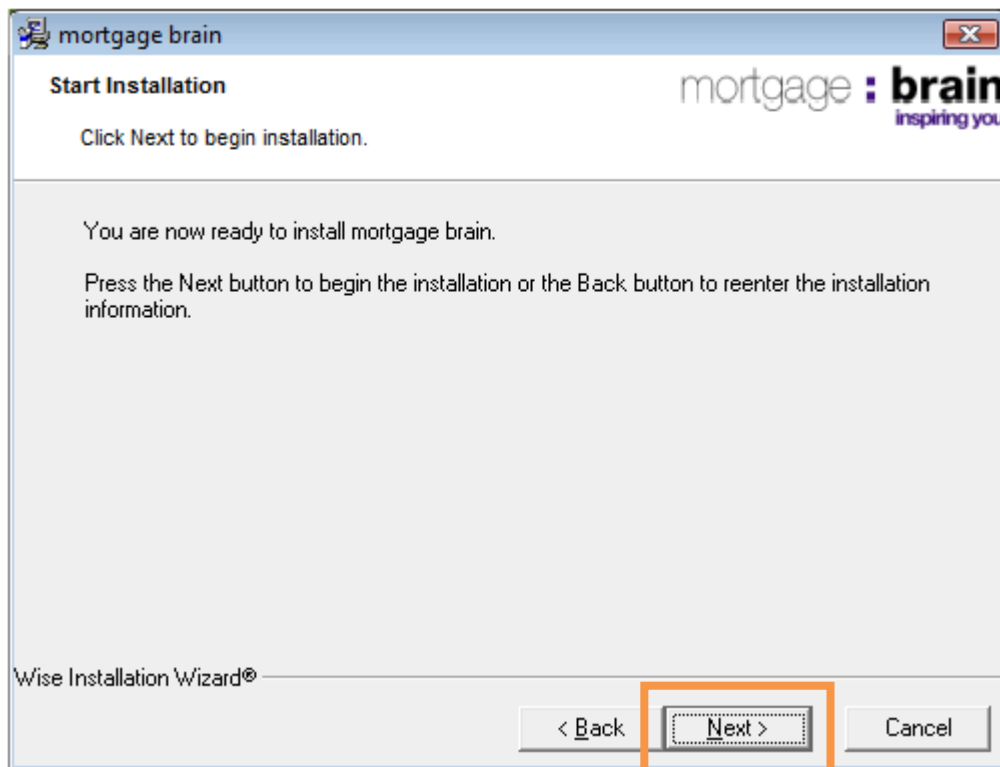


- Choose whether you wish to back up your existing Mortgage Brain Premier installation and its destination drive. Click **Next**.

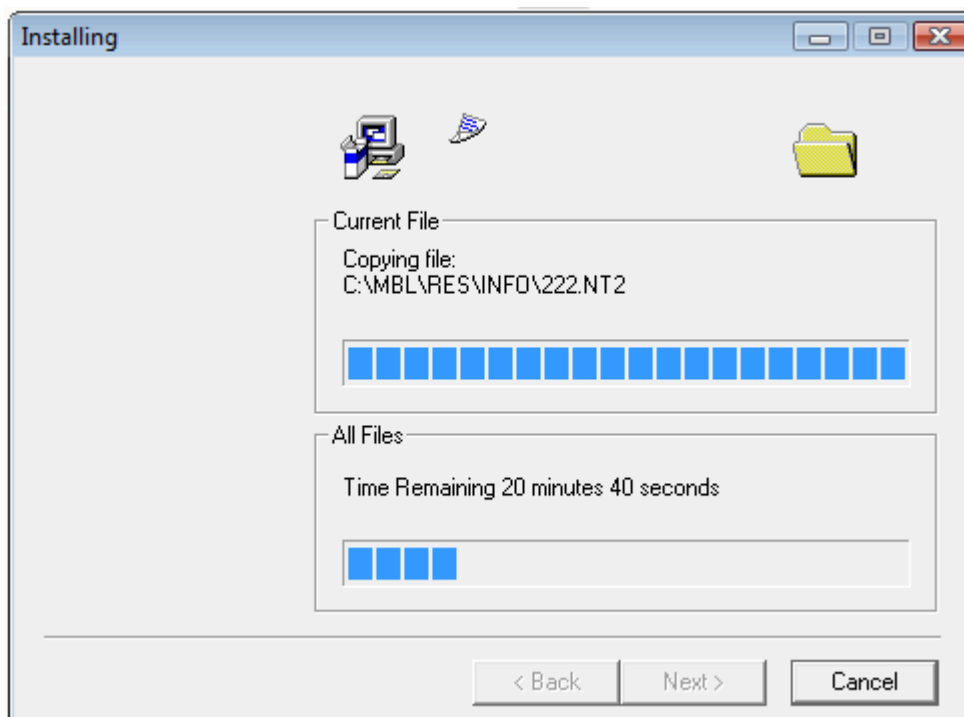




- Click **Next** to start the installation process.

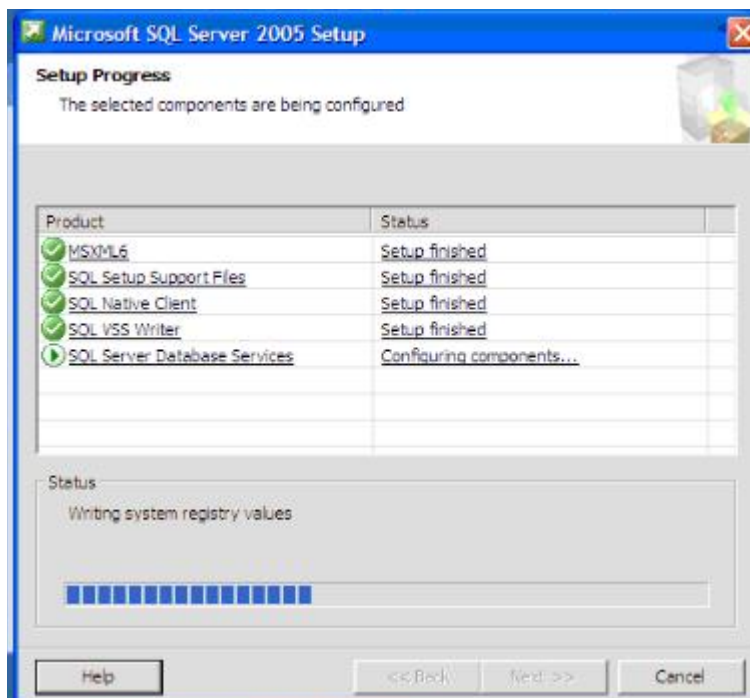
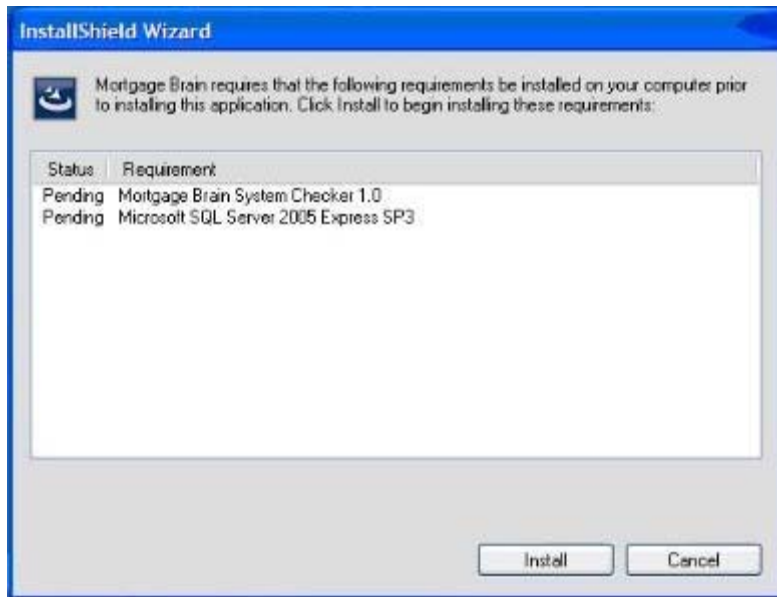


- The following screen will appear, it will give you an indication of how long the install will take.



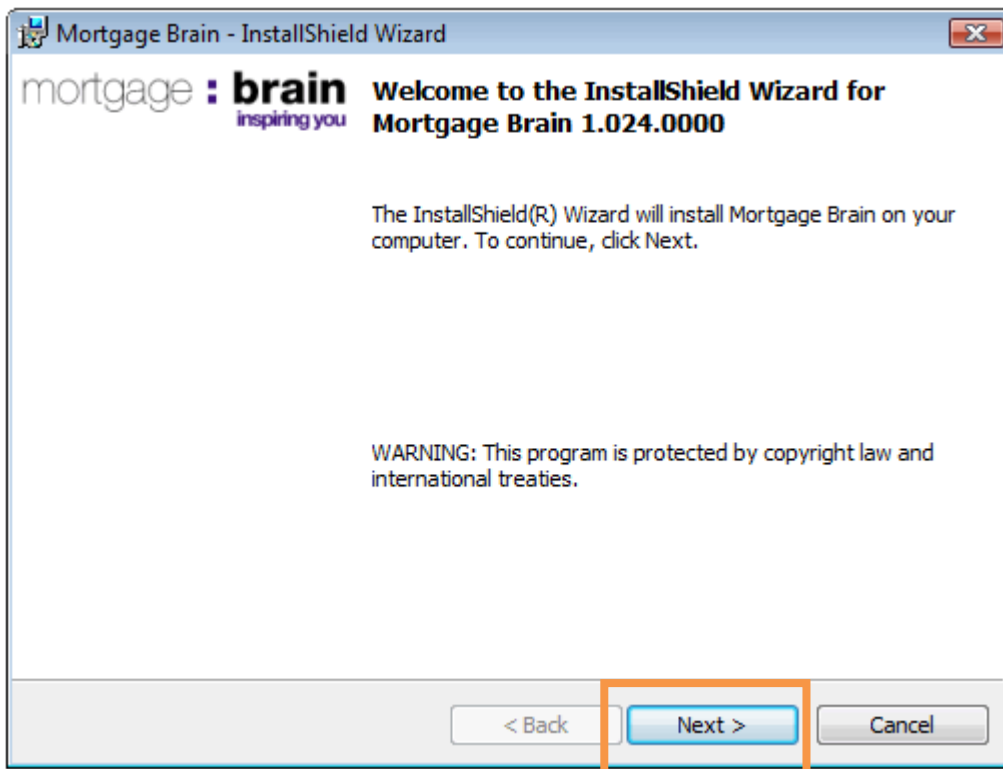


- You might see these screens if you don't have .net or Microsoft SQL Server 2005 express install on your machine.

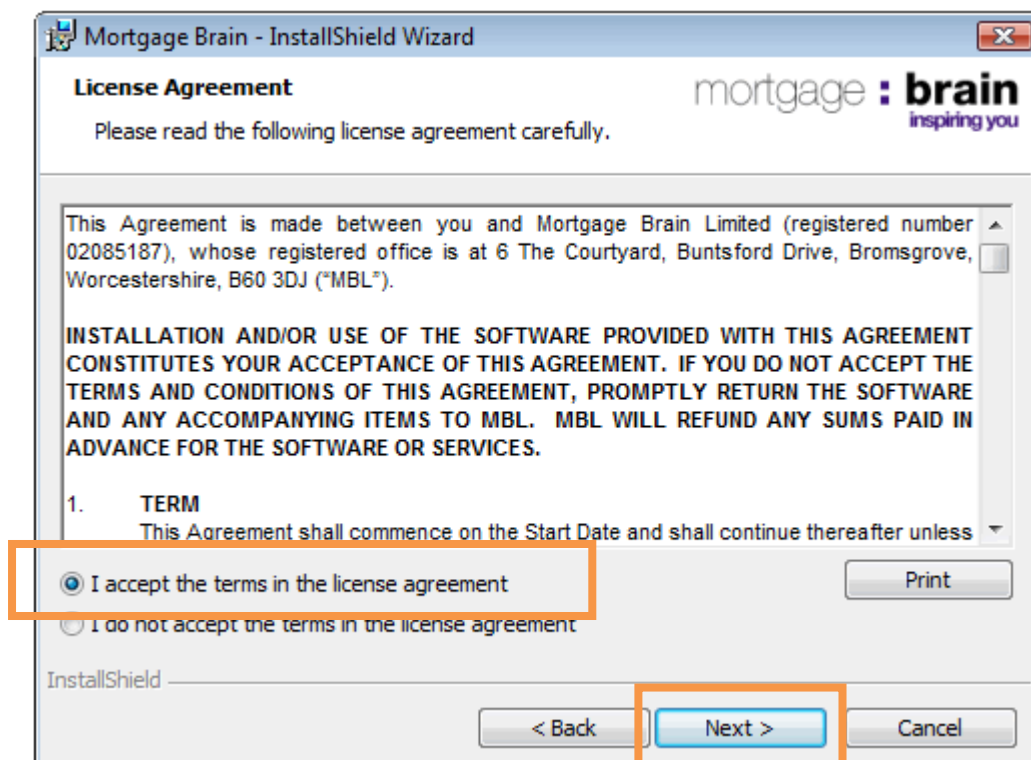




- The Wizard will appear once all files have been copied (only if you selected **Yes** to the back up option).

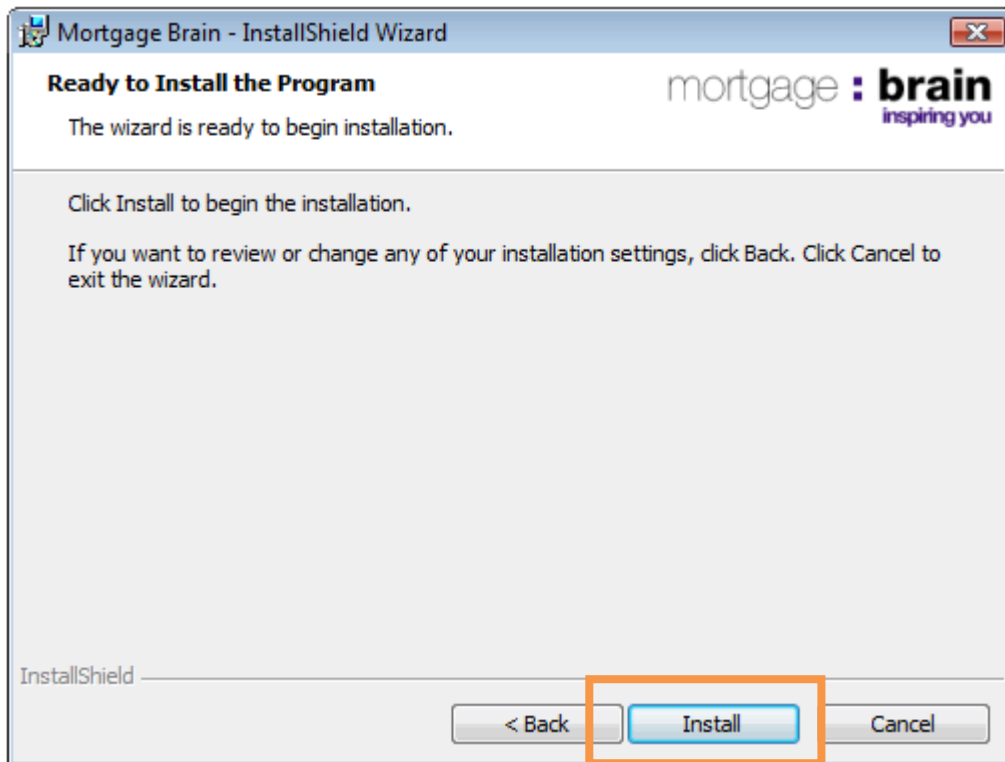


- To complete the installation, you must **Accept** the Terms and Conditions:

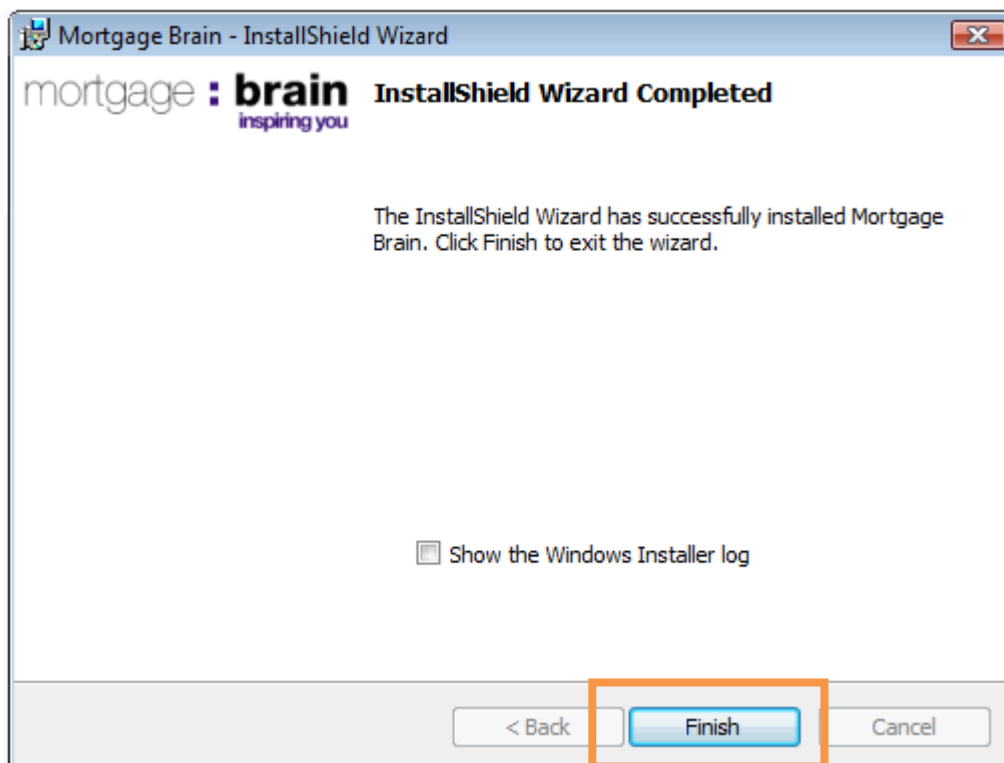




- The following screen will appear, click **Install**.



- This screen will then appear, click **Finish**.





You have now successfully installed **ALL NEW** MortgageBrain!

[Click here](#) for a comprehensive set of help guides including how to import your data from other sourcing systems.

If you cannot find what you are looking for, please call the MortgageBrain helpdesk on **0871 384 0194** to speak with someone who will be happy to assist you.